

Alaska Department of Fish and Game

Habitat Section
Southeast Region



113-59-10040-2416 Tributary 1

ADDITION

Water body name:

Quad: Sitka C-4

Upper Reach Latitude: 57.527726 **Longitude:** -135.059559

Lower Reach Latitude: 57.526456 **Longitude:** -135.057647

Survey date: 8/7/2023

Species & Lifestage:

Survey crew: DK, FC

Findings: We surveyed this uncataloged stream using a backpack electrofisher, baited minnow traps, and GPS and captured juvenile coho salmon. The stream is narrow with sections that contain iron floc. The upper extent of the stream is in wetland habitat; the channel narrows and flows through disconnected ponds (Table 1; Figures 1–3).

Recommendations: Add this uncataloged stream to the anadromous waters catalog for rearing coho salmon up to waypoint 506 (Figure 4).

Nomination: Pending

Table 1.—113-59-10040-2416 tributary 1 survey data.

Waypoint	Latitude	Longitude	Notes	Stream Width ft	Stream Substrate	Habitat Features	Gradient %	Sample Effort	Sample Results
480	57.526760	-135.058194	Small stream with minimal flow. Pipe is 1ft CSP perched 12in at the outlet and not passing water at the inlet. Trap set downstream. Will shock upstream if fish are present. Flow gets diverted into ditch upstream. second culvert found that is set on top of stream, seems passable for fish.	6-8	Fine Organic Fine Organic		1-2	MT	2 CO
501	57.52701	-135.058386	Channel parallels road in-old ditch line, begins to flow away from the road. Water is low and stream is filled with iron flocc. Small dry tributary on stream right flows from wetland.	4-6	Fine Organic		1-2	Not Fished	
502	57.527194	-135.058462	Water is very low, no fish seen. Return when higher water.						
505	57.527457	-135.059222	Top of habitat, begins to steepen up in wetland. Second coho fell from net during photo.	2-4	Fine Organic		2-4	EF	2 CO
506	57.527728	-135.059577	Top of wetland habitat, small channel flows through wetland in disconnected ponds. Upstream the channel seeps out of the ground.	2-4	Fine Organic		2-4	EF	2 CO
514	57.526685	-135.057701	Confluence with anadromous tributary.						
515	57.526455	-135.057668	Confluence with main channel. Incised about 4 ft towards end of stream.						



Figure 1. Downstream at waypoint 505.



Figure 2. Upstream at waypoint 501.



Figure 3. Culvert inlet at waypoint 480.



Figure 4. Culvert outlet at waypoint 480.



Figure 5. Juvenile coho salmon caught at waypoint 506.

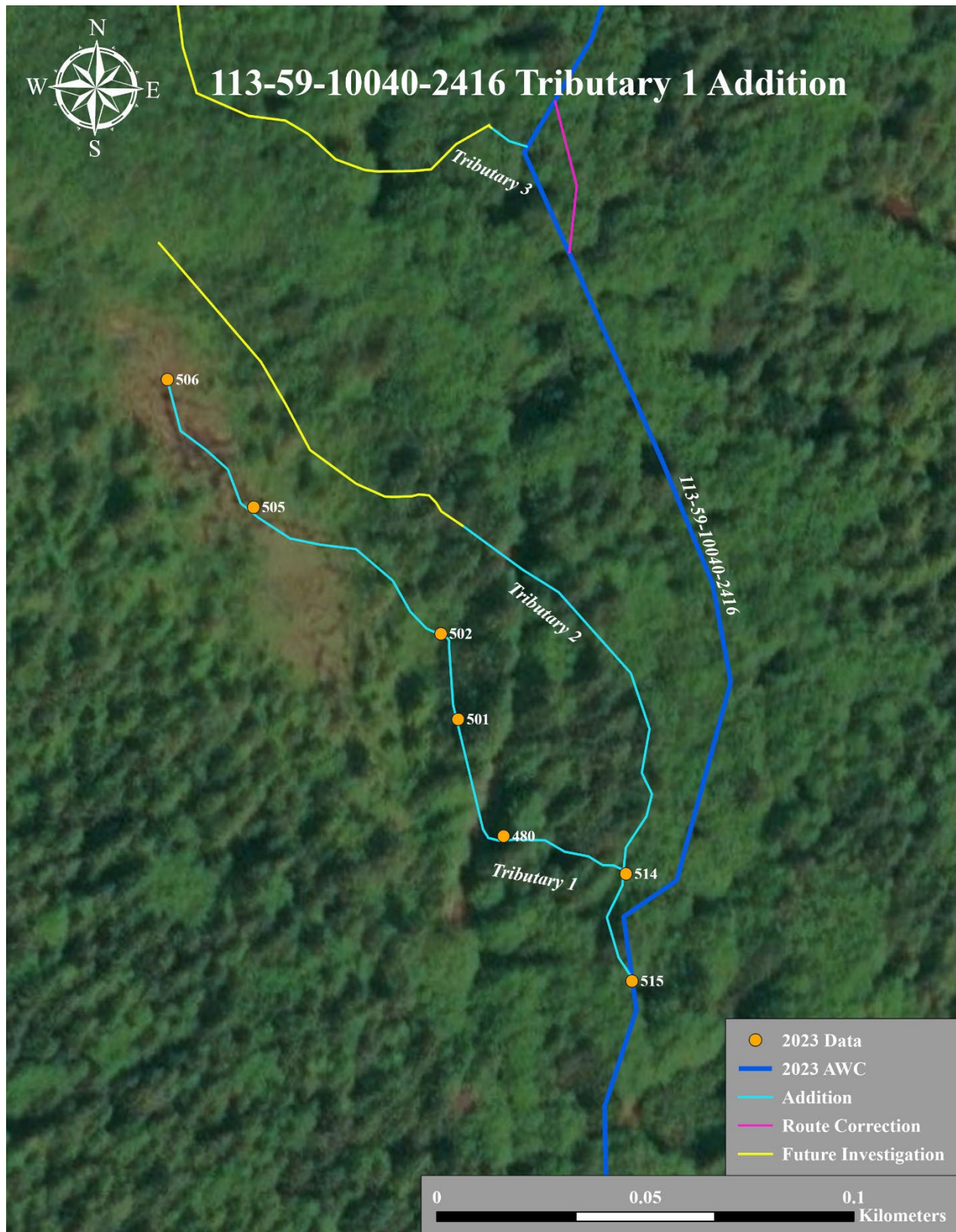


Figure 6. 113-59-10040-2416 tributary 1 addition map.